

Migrating to JPEG2000 at the Library of Congress



By
Colleen R. Cahill
Geography & Map Division
November, 2004

1995

- ◆ Loan of Tangent Scanner to Geography & Map Division



It was a Jungle Out there...



A plan of my farm on Little Huntg. Creek & Potomk. R. G. W.

To change view, select desired zoom level and window size from the options below the Zoom View window and then click on the image. The display will be centered where you click. To move up, down, left, or right within a zoom level, click near the edge of the image in the Zoom View or select an area in the Navigator View. The red box on the Navigator View indicates the area of the image being viewed in the Zoom View.

Zoom View



Navigator View



Zoom In Zoom Out

[Full Image](#)

2001

- ◆ Large image Compression
- ◆ Mosaicing
- ◆ Work in Current Interface
- ◆ Metadata Support
- ◆ More Widely Available in LC
- ◆ Work on LC Computer Systems
- ◆ Cost

Upgrade MrSID?

- ◆ Image Server not available in AIX UNIX
- ◆ Require New Hardware
- ◆ Connections to current Internet Hardware
- ◆ Charging By-the-Byte for compression

JPEG2000

- ◆ JPEG2000 Evaluation Project

- ◆ Various Vendors

 - ◆ LuraWave

 - ◆ Aware

Patrons

Costs

Longevity

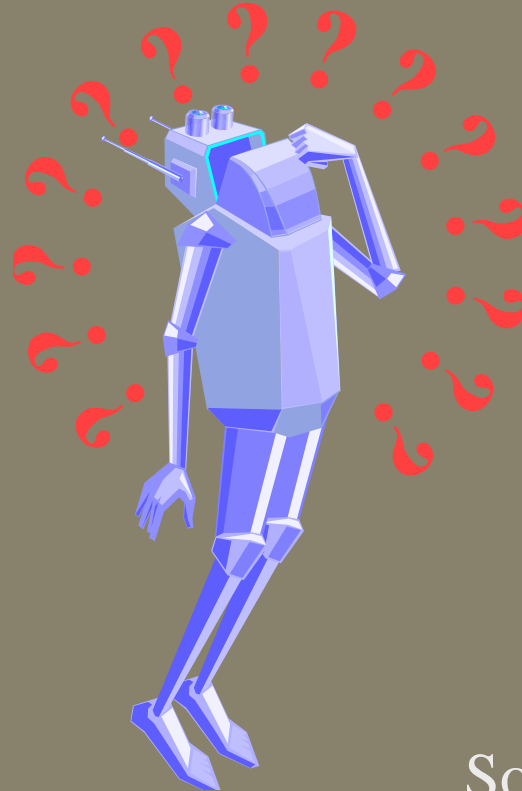
Security

Benefits

Standards

Software

Hardware



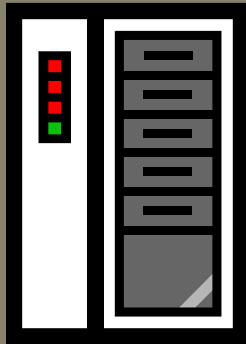
JPEG2000 Advantages

- ◆ Open Source International Standard
 - ◆ ISO/IEC 15444-3
 - ◆ <http://www.jpeg.org>
- ◆ Wavelet
- ◆ Levels of Compression, lossy to lossless
- ◆ Embedded Metadata

Aware JPEG2000

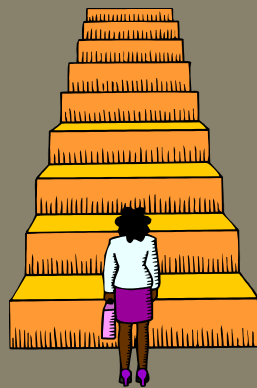
- ◆ Good Reviews by Outside Sources
- ◆ Follows the Standards
- ◆ Would work in LC Web site along with MrSID files
- ◆ AIX UNIX software
- ◆ Less Costly

 A W A R E



Testing

- ◆ Based on Previous Workflow
- ◆ Easy to Use
- ◆ Handles many files in one request
- ◆ No problem with several requests at once
- ◆ Created Thumbnails



- ◆ Server impact of Simultaneous Compression and Image Retrieval
- ◆ Image Viewers and Decompressors
- ◆ Obtaining Approval for Live Release



- ◆ Compress files on AIX server instead of Windows 2000 server
- ◆ Only compressing in JPEG2000
- ◆ Will keep raw and processed TIFF files from now on
- ◆ Project to convert all images to JPEG2000



◆ [http://memory.loc.gov/ammem/
gmdhtml/gmdhome.html](http://memory.loc.gov/ammem/gmdhtml/gmdhome.html)

A decorative frame with a light gray background. The top edge features a series of small, repeating semi-circular motifs. The corners are adorned with spiral scrollwork. Two vertical columns are positioned on the left and right sides, framing the central area.

Questions?