



Hazus Starter Kit Introduction

Bert Struik
November 21, 2012

Starter Kit Concept



- Provide resources to help set up and start the use of Hazus Canada.
- Provide overviews and demonstrations of the necessary steps to set up Hazus and start using Hazus.
- Do these things through the CanHUG meetings and accessible websites.



shutterstock · 80024281

Kit Components

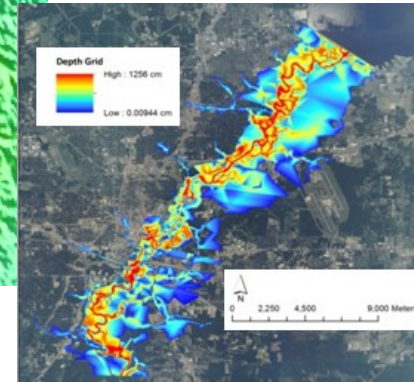
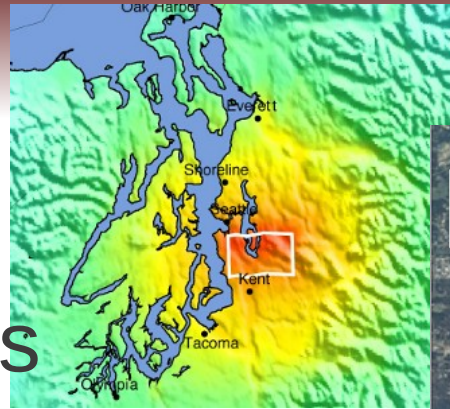


- Inputs (ingredients)
- Installation (equipment)
- Setup (turn on oven, mix, put in pans)
- Operation (bake)
- Outputs (cake, decorate, store, serve)

Hazus Inputs



- Hazard scenarios



- Assets, Part 1 - Building stock



- Assets, Part 2 - Infrastructure and other



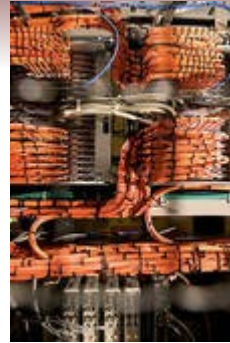
- Demographics



Hazus Installation



Infrastructure



Software



Hardware



Maintenance

Super Soft Ware



Infrastructure



Runs on stand alone computers
or those connected to networks

Internet access is highly recommended.

Operator may occasionally need to access online digital elevation models, technical support, software patches, and current program status reports

Software



- Hazus is plug-in for ESRI ArcGIS and requires ArcGIS to operate. Spatial Analyst extension required with Flood Module.
- Latest version is Hazus 2.1
- Hazus 2.1 is compatible with Windows 7 (32 and 64 bit) Service Pack 1, and Windows XP Service Pack 3.
- Hazus 2.1 is compatible with ArcGIS 10.0 Service Pack 2. Hazus 2.1 runs under Service Pack 3 but is not 100% certified.
- The underlying database engine is SQL Server Express 2008 R2.

<http://www.fema.gov/hazus-software#1>

Hazus 2.1 Canada



- “Out of the box” operational Earthquake Module
- Operational Comprehensive Data Management Module
- Flood module in development
- Hurricane module development awaits new project
- Comes with national residential building stock and demographic datasets
- Can be obtained from Nicky.Hastings@nrcan.gc.ca

Hazus 2.1 Installation



Basic Installation

- 1 ArcGIS 10 with service pack 2 must be installed before installing Hazus
- 2 With Admin and Debugging privileges: Install Hazus 2.1 following instructions on pages 2 - 8 of the installation guide in the document hzmh2_1_gs.pdf found at:

<http://www.fema.gov/library/viewRecord.do?id=5120>
See: Getting Started with Hazus 2.1
- 3 Getting Started with Hazus Canada also available as hand out (nicky.hastings@nrcan.gc.ca)

Hardware



≥ 2.2 GHz dual-core

≥ 2GB RAM

≥ 10GB disk space for one
multi-hazard study region

24bit video card with 128 Mb
memory onboard

1078x768 resolution
recommended



<http://www.fema.gov/library/viewRecord.do?id=5120>

See: **Getting Started with Hazus 2.1**

Maintenance



Hazus updates control which version of Arc can be used.

Hazus updates improve loss estimate capability and may update national data sources.

Hazus Canada updates make Canadian modules functional in addition to Hazus USA capability changes.

Further information



<http://www.fema.gov/hazus>

Nicky.Hastings@nrcan.gc.ca

Hazus User Groups on LinkedIn

Bert.Struik@nrcan.gc.ca

Technical Support

<https://support.hazus.us>

For login credentials e-mail
helpdesk@support.hazus.us

Help Desk is available 24/7

1-877-336-2627 during office hours