



March 5, 2013

Hazus User Group Leaders Call

Agenda

- Welcome and Updates
 - Christina Tierno, CDS Team
- Vision for Hazus User Groups
 - Christina Tierno, CDS Team
- Hazus Database Updates
 - Richard Butgereit, Florida Department of Emergency Management
- Updates from Regions/User Groups

Hazus Updates – Digital Download

- Hazus software will soon be available to download online – Coming in April 2013
- In addition to ordering Hazus on DVD, users will be able visit the Map Service Center (MSC) site (<https://msc.fema.gov>) to download Hazus software and state datasets
- Benefits:
 - No wait time – instant download instead of receiving a DVD in the mail
 - Choice of downloading Hazus software and/or individual state datasets
 - Easy access to customer service
- Note: International users are not eligible to download Hazus software and must order a DVD by contacting the FEMA Map Information eXchange (FMIX)

Hazus Updates – Training Field Courses

- If anyone is hosting or helping facilitate a Hazus regional/field training course, please let the CDS Outreach team know
- The team is tracking all regional/field training courses in order to monitor and keep track of all Hazus training courses
- Email: hazus@arcaspicio.com with:
 - Title of the course
 - Location
 - Dates

Vision Document for Hazus User Groups

- The CDS Outreach team developed a document that details the mission of the User Groups, the vision for the future, and how FEMA plans to implement to vision
- The **mission** of the Hazus User Groups is to create a collaborative and supportive space for Hazus users that helps create partnerships, encourages increased and more efficient use of Hazus, and provides opportunity to share information, while also keeping members up-to-date and providing them with information that helps them mitigate risk by using the Hazus tool for planning, preparedness, and response

Vision for the Future of Hazus User Groups

- The **vision** is to create self-sustaining User Groups, who are the central point of the community that enables information sharing and relationship building among Hazus users, enables the sharing of best practices to ultimately improve the use of Hazus for planning and mitigation, and that helps users effectively use Hazus and make improvements to the tool for the benefit of the Hazus community

Implementing the Vision

- Services the CDS Outreach team provides to User Groups:
 - Hazus User Group calls – national and leaders
 - HotZone newsletters
 - LinkedIn Hazus webpage
 - GovDelivery
 - Leaders Toolkit
 - Best Practices (planned)
 - Working session with Hazus leaders at the 2013 Hazus Conference (planned)

Hazus Database Updates

Richard Butgereit, Florida Department of Emergency Management (FDEM)

- FDEM has updated the essential facilities, demographics (CENSUS 2010), and aggregated building stock (parcels 2011)



Richard Butgereit

richard.butgereit@em.myflorida.com

Information Management Section Head
Florida Division of Emergency Management
850-413-9907

Update of HAZUS default databases for Florida





FEMA

Florida CDMS Web Portal



Welcome to the Florida CDMS Web Portal

This website is used to facilitate the update and distribution of HAZUS-MH MR3 statewide datasets and utilizes the FEMA Comprehensive Data Management System (CDMS) v1.0 as the foundation for data updates.

Please login to access system functionality or data.

Log In

User Name: richardb

Password: ●●●●●●●●

Log In

[Forgot your password?](#)

For help with this application, please contact:

Richard Butgereit
FDEM

850-413-9907

richard.butgereit@em.myflorida.com



[Log Out](#)

Search Statewide Datasets

Select Geographic Area

County

County Name

- Alachua
- Baker
- Bay
- Bradford
- Brevard
- Broward
- Calhoun
- Charlotte
- Citrus
- Clay
- Collier
- Columbia
- Desoto
- Dixie
- Duval

Select Data Layer

- | | | |
|--------------------------|--------------------------------|--|
| <input type="checkbox"/> | Aggregated Data | Structure Exposure by Census Block |
| <input type="checkbox"/> | Aggregated Data | Structure Exposure by Census Tract |
| <input type="checkbox"/> | Aggregated Data | Vehicles - Day Inventory by Census Block |
| <input type="checkbox"/> | Aggregated Data | Vehicles - Night Inventory by Census Block |
| <input type="checkbox"/> | Essential Facilities | Emergency Operations Centers Facilities |
| <input type="checkbox"/> | Essential Facilities | Fire Station Facilities |
| <input type="checkbox"/> | Essential Facilities | Medical Care Facilities |
| <input type="checkbox"/> | Essential Facilities | Police Station Facilities |
| <input type="checkbox"/> | Essential Facilities | School Facilities |
| <input type="checkbox"/> | High Potential Loss Facilities | Dams |
| <input type="checkbox"/> | High Potential Loss Facilities | Hazardous Materials Sites |
| <input type="checkbox"/> | High Potential Loss Facilities | Military |
| <input type="checkbox"/> | High Potential Loss Facilities | Nuclear Power Plants |
| <input type="checkbox"/> | Transportation Systems | Airport Facilities |
| <input type="checkbox"/> | Transportation Systems | Airport Runways |
| <input type="checkbox"/> | Transportation Systems | Bus Facilities |
| <input type="checkbox"/> | Transportation Systems | Ferry Facilities |

Select Hazards

- Earthquake
- Flood
- Hurricane Wind

Run Query

Update of default databases

- As a component of the State Hazard Mitigation Plan, statewide default databases updated
 - Demographics
 - Essential Facilities
 - Aggregate Building Stock



Demographics

- Updated courtesy of FEMA Region IV

Challenges

- Fitting 2010 numbers to 2000 geography
- Data elements needed for block group based models (earthquake and flood) not yet available



Essential Facilities

- FDEM maintains “living” critical facilities inventory –
 - data model based upon operational needs of the FL State Emergency Operation Center
 - updated via annual data call to county emergency management programs (in support of EMPA)
 - additionally updated by self-serving of data from county GIS data download websites & some state agencies
 - partnership with Florida GeoPlan Center
 - tweaks made to data model to accommodate HAZUS (short names)



Essential Facilities

- Exports from critical facilities inventory taken to update essential facilities within HAZUS
- Not a priority to update other datasets, due to lack of analysis with hurricane wind model
 - High potential loss facilities
 - Transportation facilities



Aggregate Building Stock

- Update based upon 2011 parcels
 1. Crosswalk between DOR use codes and HAZUS land use types (LUT) created
 2. RS Means used to derive estimated replacement cost (RPC) per square foot per land use type
 3. Spatial view created to join, calculate –
 $\text{Sqft} \times \text{RPC/sqft for LUT} = \text{Total RPC}$
 4. Contents calculated as 50%** of RPC

** Citizens Property Insurance provided estimate



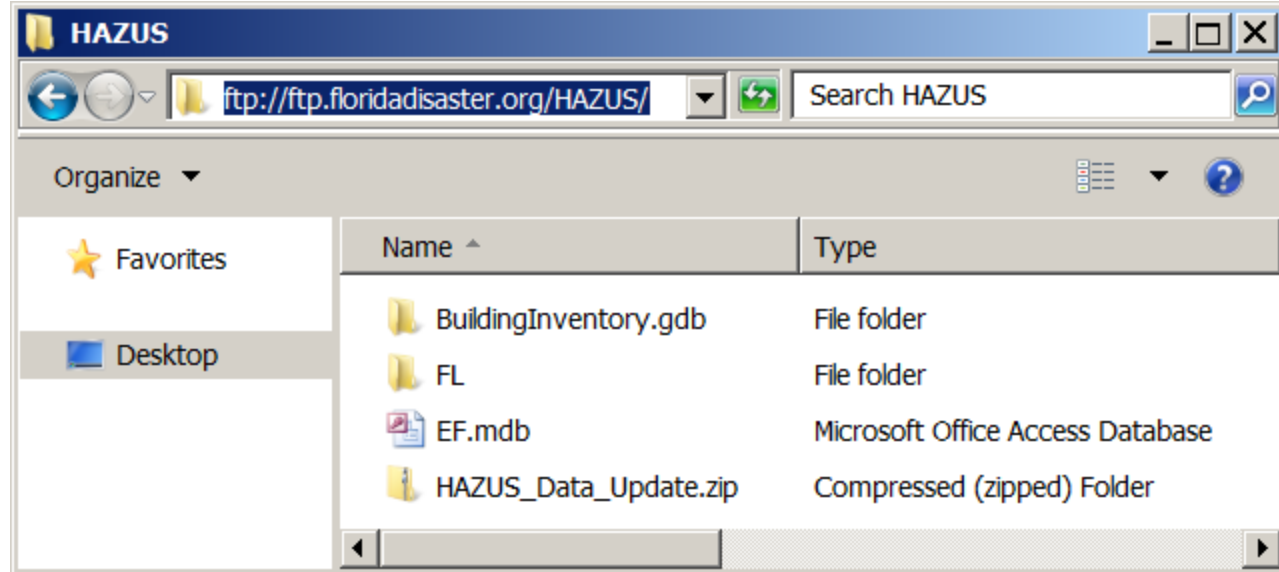
Aggregate Building Stock

5. Parcel centroids derived
6. Centroids spatially joined to tracts
7. Centroids summed for each tract
8. Resultant tables uploaded using CDMS



**GET A
PLAN!**
FloridaDisaster.org

Download of data



<ftp://ftp.floridadisaster.org>

- Contact Richard.Butgereit@em.myflorida.com 850-413-9907

- Use Windows Explorer or FTP client
 - Don't use Internet Explorer



**GET A
PLAN!**
FloridaDisaster.org

Update of default databases

- BuildingInventory.gdb – geodatabase of parcel centroids
- FL folder – Copy over FL in HAZUS Data directory to update
 - BndryGBS.mdb
- EF.mdb- Has some value information, updated points. Kept separate because value is rough estimate



Updates from User Groups

- Updates from User Groups / Regions

Closing Remarks

- The next Leaders call will be held on May 7th, 2013 at 3pm Eastern Time
- Meeting minutes from this call will be emailed to the group no later than 24 hours after this call
- The next National User Group call will be next week, March 12th, 2013 at 3pm Eastern Time

We welcome your ideas and suggestions for future calls. Please email these to us at hazus@arcaspicio.com. Thank you for joining us.